

# ergoCentric

SEATING • SYSTEMS



## GRADE ONE FABRICS

OPEN HOUSE	2334
PRISM	34143
MOGULS	2386

## Prism Upholstery 34143



1554 LINEN



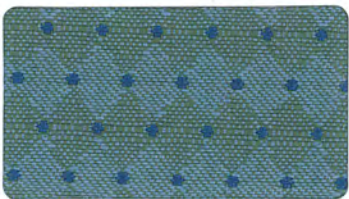
3225 CHERRY



0955 NUGGET



3535 BRANDY



1744 CARIBBEAN



3515 GRANITE



0614 SLATE

## Moguls Upholstery 2386



2191 RHODODENDRON



2197 GRAPHITE



2188 FLARE



2198 COFFEE BEAN



2190 HONEY COMB



2231 NAVY



2199 ONYX



2194 THISTLE

# ergoCentric

SEATING • SYSTEMS

## Open House Upholstery 2334



2048 GREEN OLIVE



2087 GREEN APPLE



2035 ANGORA



2034 STRAW



2014 RED DELICIOUS



2049 GOOSE



2020 AMBER



2085 THISTLE



2083 COFFEE BEAN



2053 ASTEROID



2044 MULBERRY



2025 MIDNIGHT



2016 ONYX



# 10 Year Performance Warranty

\*Please contact customer service at 1.866.438.3746

## Upholstery Specifications

Style	OPEN HOUSE 2334 GRADE 1	PRISM 34143 GRADE 1	MOGULS 2386 GRADE 1
Contents	100% recycled polyester	100% recycled polyester	100% recycled polyester
Weight	12.4 ± 1.0 oz./lin. yd.	10.5 ± 0.5 oz./lin. yd.	13.4 ± 0.5 oz./lin. yd.
Width	54" min. useable	54" min. useable	54" min. useable
Repeat	none	none	0.8" vertical, 0.26" horizontal
Backing	none	none	none
Treatment	none	<b>BLOCKaide™</b>	none
<b>Cleaning Code</b>	W-S	W-S	W-S
	Clean with water-based cleaning agents, foam or pure, water-free solvents. Vacuuming or light brushing is recommended to prevent dust and soil buildup.	Clean with water-based cleaning agents, foam or pure, water-free solvents. Vacuuming or light brushing is recommended to prevent dust and soil buildup.	Clean with water-based cleaning agents, foam or pure, water-free solvents. Vacuuming or light brushing is recommended to prevent dust and soil buildup.
<b>Performance</b>			
Breaking strength (ASTM D5034)	275 lbs. min. warp and fill	200 lbs. min. warp, 175 lbs. min. fill	250 lbs. min. warp, 180 lbs. min. fill
Tear (ASTM D2261)	35 lbs. min. warp and fill	25 lbs. min. warp and fill	20 lbs. min. warp and fill
Seam Slippage (ASTM D4034)	50 lbs. min. warp and fill	60 lbs. min. warp, 50 lbs. min. fill	60 lbs. min. warp and fill
Pilling resistance (ASTM D3511)	class 4 min.	class 4 min.	class 4 min.
Colorfastness to light (AATCC 16 Option 3)	40 hrs. min.	40 hrs. min.	40 hrs. min.
Colorfastness to crocking (AATCC 8)	class 4 min. dry, class 3 min. wet	class 4 min. dry, class 3 min. wet	class 4 min. dry, class 3 min. wet
Colorfastness to water (AATCC 107)	class 3 min. for staining, class 4 min. for color change	class 3 min. for staining, class 4 min. for color change	class 3 min. for staining, class 4 min. for color change
Abrasion resistance (ASTM D4157)	250,000 double rubs - cotton duck	100,000 double rubs - cotton duck	100,000 double rubs - cotton duck
<b>Flammability</b>			
State of CA. Tech. Bulletin, 117 SEC. E	passes	passes	passes
UFAC	class 1	class 1	class 1
NFPA 260	class 1	class 1	class 1

Colors may vary slightly between dye lots. These are directional fabrics. Application testing of these products is recommended.



Terratex® is a registered trademark of True Textiles, Inc. and designates fabrics that are made from 100% recycled or compostable material using increasingly sustainable manufacturing practices to produce a high quality product that is recyclable at the end of its useful life. [www.terratex.com](http://www.terratex.com)



CO<sub>2</sub> emissions from 100% of the electricity used by the manufacturer to produce this product have been measured and offset in accordance with The CarbonNeutral Protocol.

**BLOCKaide™**

BLOCKaide is a durable water and oil resistant treatment formulated for commercial interior fabrics. Liquid spills will bead up on the surface of the fabric so that they can be removed before they stain the fibers.

For full fabric selections visit [ergoCentric.com](http://ergoCentric.com)  
To request samples call 1.866.GET.ERGO® (438.3746)

**ergoCentric**  
SEATING • SYSTEMS

